

Meet the New Staff Members

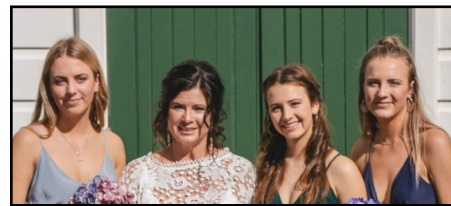
Nikki Moloney—AgeConnect Coordinator



Hi! I'm Nikki Moloney, I have been with Age Concern for one month and I am enjoying my role as AgeConnect Coordinator, working alongside clients of Age Concern who would like to explore more opportunities in their life, gaining more independence to try new activities.

My background is connecting adults to opportunities in their community, finding out their passions and identifying where that niche is for them. I am excited to find meaningful activities in the various communities around the Bay of Plenty.

If you would like to catch up for a chat about what's available to you, give me a call. I look forward to meeting with you— *Nikki*



*Ali Hill —
Visiting Service
Coordinator*

I often say that I wish I had been raised in times of old! Partly because of my lifelong love of horses and also because of my appreciation of the nature and the great outdoors. These passions influenced my initial choice in my working life by going to farming college in Bulls! (ironic NZ town name for a farming college!). I soon realised that farming at that time, was presenting a few 'road blocks', so I decided to join the NZ Police. This was an interesting, challenging and rewarding decade, experiencing a number of different areas of Policing. One of which was establishing the Mounted Constabulary, tying that love into my career was momentous. I moved to

Tauranga in 2001 when my third daughter was off to school, I spent the next decade in a variety of roles at a retirement village in Papamoa. Following this I embraced a new role, as the Activities Coordinator in a 40 bed Care Home (with both hospital and dementia level care).

I have a heart for ALL people and especially cherish 'old school' values, wisdom and life experiences (especially coming from people with a few more years under their belts!).

My wonderfully, supportive family are my greatest cheerleaders and treasures.

I consider it a great privilege to be apart of the Age Concern community. Thank you for welcoming me into the fold.

Smiles from *Ali*

International Day of the Older Person (IDOP)

Every year in October we celebrate International Day of Older Persons (IDOP). It is a time to celebrate the value of older people and a chance to acknowledge their contributions to our communities; in the work place, as volunteers, as caregivers and as whole people, with dreams, aspirations, wisdom and experience.

Age Concern Tauranga warmly invites you for morning tea to celebrate this day!

**Wednesday, 5 October, 10.30am—12noon
St Stephens Methodist Church,**

9 Brookfield Terrace

Fun Dress Theme: PURPLE



For catering purposes,

RSVP to Deb on (07) 578 2631

Our Vision: Older people live a valued life in an inclusive society.



This **FREE** classroom based course will help you re-familiarise yourself with traffic rules and safe driving practices. It will also increase your knowledge about other transport options and help

Upcoming Courses Time: 10am — 2.15pm

DATE: Tuesday 13 September

VENUE: Mount Maunganui RSA, 544 Maunganui Rd

DATE: Friday 16 September

VENUE: Matua Bowling Club, 108 Levers Road

DATE: Wednesday 21 September

VENUE: Papamoa Sports and Recreation Centre

DATE: Friday 28 October

VENUE: Tauranga Senior Citizens Hall, 14 Norris St

DATE: Wednesday 2 November

VENUE: Greerton Senior Citizens Hall, 33 Maitland St

DATE: Wednesday 9 November

VENUE: Paengaroa Community Hall, 4 Old Coach Rd

REGISTRATION IS ESSENTIAL

Please call us on 07 578 2631 to register
Tea/coffee provided, bring your own lunch



MyMSD / Seniors Services 0800 number

Did you know you can do a lot online?

MyMSD is a great option for some services such as:

- Checking upcoming payments
- Updating contact information
- Viewing letters
- Applying for NZ Superannuation
- Requesting help with one-off costs

Information about the services MSD offers to Seniors can be found at the Work and Income website www.workandincome.govt.nz/eligibility/seniors/
To register for MyMSD www.my.msd.govt.nz

If you can't find what you need online, you can call MSD. The New Zealand Superannuation team are available Monday—Friday, 7am to 6pm. Phone: 0800 552 002

When you call, ensure to key in your 9-digit client number and answer any security questions that may be asked. This allows faster handling of your call and allows them to offer you a call back when the service is operating.

For other enquiries, such as Community Services Cards, SuperGold Cards, Veteran's Pension or how to contact MSD if your deaf, hard of hearing or have a speech impairment, you can find the contact details on the Work and Income website:

[www.workandincome.govt.nz/eligibility/seniors/
community-services-card-and-supergold-card](http://www.workandincome.govt.nz/eligibility/seniors/community-services-card-and-supergold-card)



*We would like to acknowledge **GO GENEROSITY and Z Energy BOP** for their very generous donation to Age Concern Tauranga and supporting the services we provide in the community.*

Age Concern Tauranga thank the following Funders and Sponsors for their continued support:





Keen to be a part of a local research project?

Ageing well and maintaining independence for older people and future generations



Tēnā koe, nau mai, haere mai!

We invite you to take part in a study that helps the University of Auckland explore how **older people living in the community** can improve and maintain health and wellbeing through community networks and technology.

You must be 75 years+ or 60+ (Māori/Pasifika) and reside in the Tauranga Region (and surrounding areas) and have a device such as a mobile phone or tablet.

Contact us and one of our locally based Research Assistants will be in touch.

1. Phone 0800 222 848 (to leave a voicemail)
2. Email: awesom.research@auckland.ac.nz with contact details
3. Scan this QR Code and enter your details



Participating in the study will enter you into a draw to win a voucher.

Ngā mihi—Thank you, we look forward to getting in touch.

Approved by the Health and Disability Ethics Committee on 13/12/2021, reference number: 20/CEN/242.

BOP Regional Public Transport Plan

Age Concern were invited to take part in this project and make a submission.

A submission form was completed and Roland Edwards was given the task of speaking to the submission at the public hearing.

Bus stops. The City Council, does not appear to consider the importance and convenience of bus stops, e.g. Cameron Road - when the road works have been completed, bus stops have not been replaced. All bus stops should have seating and shelter.

Transfer points. There is merit in establishing these, but it needs to be well managed. A common location, timetables coordinated and seating with shelter.

Provision of a transport hub in the city centre. When people have completed their business or shopping, a facility (covered and with seating) would provide a comfortable place to wait for buses.

There is existing rail from Omokoroa to Te Puke and although this is not likely to be used in the short term, land should be purchased now to provide “park and ride” facilities in the future.

Help Us Continue to Help

Did you know we are building an enduring **Age Concern Tauranga Fund** through the Acorn Foundation?

This endowment fund will allow us to have an even greater impact in our community, now and in the future.

Through your generosity, you can contribute to the growth of our fund by leaving a gift in your will, or donating during your lifetime.

Donate online now: acornfoundation.org.nz/funding/community-group-funds.



Contact us on 07 578 2631
or call the
Acorn Foundation
on 07 579 9839 for more
information.



What's On

Monthly Meeting

When: Thursday 29 September 2022

Where: Tauranga Citizens Club, 170, 13th Avenue, Tauranga

Time: 10am—11am

Cost: \$4pp tea/coffee provided

Guest Speaker: Rozie Young, Tauranga Cancer Society

Topic: All People, Every Cancer

All Welcome!

500 Card Group

Have you always wanted to play 500 but don't know how?



We will teach you. A friendly fun group gets together at 9.30am until 11.30am every Monday (except Public holidays) held at Age Concern, 177a Fraser Street, Tauranga.

Gold coin donation appreciated.

Light refreshments provided.

Coffee & Conversation Groups



Do you miss having someone to chat with over a relaxing cuppa? Then come and join our Coffee and Conversation Group to meet others who are friendly and like-minded.

For catering purposes please register your interest by phoning Age Concern on 578 2631.

Brookfield Group

When: Wednesday 7 September & Wednesday 5 October

Time: 10.30am to 12.00pm

Where: St Stephen's Methodist Church Hall, 9 Brookfield Terrace, Brookfield, Tauranga

Cost: \$3pp

Te Puke Group

When: Tuesday 13 September & Tuesday 11 October

Time: 10.30am to 12.00pm

Where: Citizens RSA, Te Puke 179 Jellicoe Street, Te Puke

Cost: \$5pp

Greerton Group

When: Thursday 8 September & Thursday 13 October

Time: 10.30am to 12.00pm

Where: Greerton Senior Citizens Hall, 33 Maitland Street, Greerton.

Cost: \$3pp

Mt Maunganui Group

When: Wednesday 21 September & Wednesday 19 October

Time: 10.30am to 12.00pm

Where: Mt Maunganui RSA, 544 Maunganui Road.

Cost: \$3pp

Wednesday Walking Group

All groups leave at 10.00am unless advised



Wednesday 7 September

Chester Street (off Cambridge Road)

Wednesday 14 September

End of Sterling Gate Drive (off Beaumaris Blvd)

Wednesday 21 September

Pyes Pa Shopping Centre

Wednesday 28 September

Pacific Avenue, Mount Maunganui

Wednesday 5 October

Briscoes, Chapel Street

Wednesday 12 October

Papamoa Plaza (Gravatt Road Bus Stop)

Wednesday 19 October

Countdown Bureta

Wednesday 26 October

Waipuna Park, Welcome Bay (off Kaitemako Road)

Age Concern Tauranga Membership Form

Please forward your subscription with this form to: Age Concern Tauranga, 177a Fraser Street, Tauranga 3112

Age Concern Tauranga is a registered charitable entity (CC25758) and appreciates the generosity of the community by way of subscriptions, donations and legacies. Donations over \$5.00 are tax deductible.

Name: Email:

Address: Postcode:

Phone: Mobile: D.O.B.:/...../.....

New Member Existing Member Receive magazine by email

Pakeha (NZ European) NZ Maori European (incl. British) Pacifica Other:

Subscription per household \$25.00 (1st April 2022 to 31st March 2023)

Donation: \$5 / \$10 / \$20 / \$50 / \$..... other **EFTPOS available. Sorry no credit card payments accepted.**

Internet Banking: 03-0445-0172665-00 Westpac (e.g. Particulars—Sub, Reference—Surname & Initial)

Donations help us to continue to promote the welfare of older people in Tauranga and are welcomed.

The views expressed in this newsletter are not necessarily those of Age Concern Tauranga. The inclusion or exclusion of any product does not mean that the publisher advocates or rejects its use.